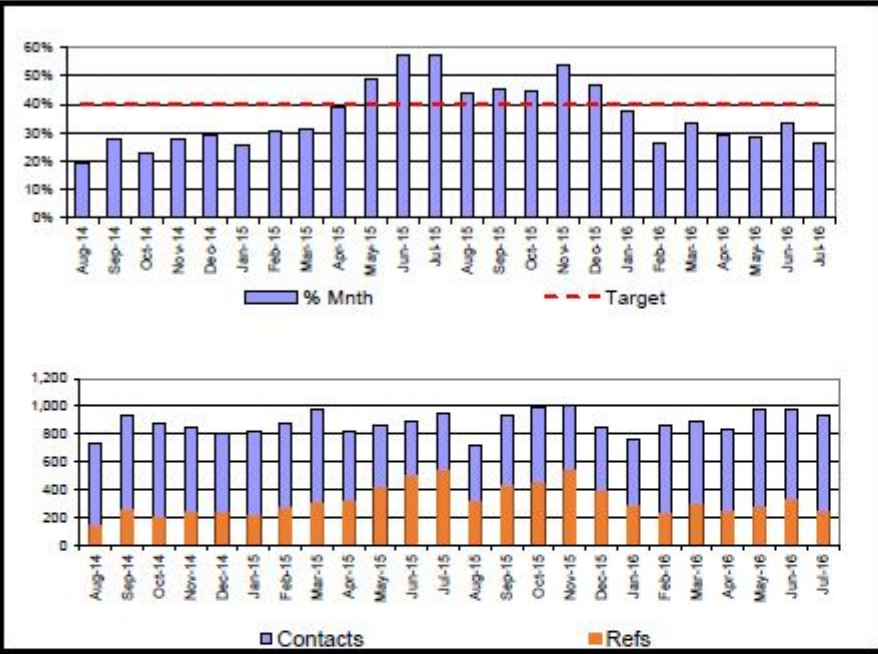


Chart 1

Number of contacts and % going on to referral July 2016



Month	Contacts	Refs	% Mnth	% YTD	Target	Var.	RAG
Aug-14	728	140	19.2%	24.6%	40.0%	-15.4%	A
Sep-14	927	254	27.4%	25.1%	40.0%	-14.9%	A
Oct-14	872	201	23.1%	24.8%	40.0%	-15.2%	A
Nov-14	849	237	27.9%	25.2%	40.0%	-14.8%	G
Dec-14	805	237	29.4%	25.6%	40.0%	-14.4%	A
Jan-15	821	213	25.9%	25.7%	40.0%	-14.3%	A
Feb-15	874	269	30.8%	26.2%	40.0%	-13.8%	A
Mar-15	976	303	31.0%	26.6%	40.0%	-13.4%	A
Apr-15	823	319	38.8%	0.0%	40.0%	-40.0%	A
May-15	860	418	48.6%	0.0%	40.0%	-40.0%	A
Jun-15	884	505	57.1%	0.0%	40.0%	-40.0%	A
Jul-15	943	538	57.1%	0.0%	40.0%	-40.0%	A
Aug-15	714	314	44.0%	0.0%	40.0%	-40.0%	A
Sep-15	936	426	45.5%	0.0%	40.0%	-40.0%	A
Oct-15	998	448	44.9%	44.9%	40.0%	4.9%	G
Nov-15	1000	539	53.9%	49.4%	40.0%	9.4%	G
Dec-15	846	393	46.5%	48.5%	40.0%	8.5%	G
Jan-16	758	283	37.3%	46.2%	40.0%	6.2%	G
Feb-16	867	227	26.2%	42.3%	40.0%	2.3%	G
Mar-16	886	295	33.3%	40.8%	40.0%	0.8%	G
Apr-16	832	242	29.1%	39.2%	40.0%	-0.8%	G
May-16	971	276	28.4%	37.8%	40.0%	-2.2%	G
Jun-16	982	329	33.5%	37.2%	40.0%	-2.8%	G
Jul-16	928	242	26.1%	36.1%	40.0%	-3.9%	G

YTD:	10,718	4,014	-	37.5%	40.0%	-2.5%	G
------	--------	-------	---	-------	-------	-------	---

CSC Commentary
 Performance is within target this month generally there has been a continued decrease in the number of contacts going onto referrals. This will continue to be monitored closely.

Definition
 The table shows the number of referrals and contacts happening in each given month. The %Mnth column shows in that month alone, the crude conversion of contacts that went onto referrals. The %YTD column shows the year to date percentage of contacts going on to referrals.

G =40 +/-10% A =+/- 10-20% R =+/- >20%

Chart 2

Number of Referrals per 10,000 - Rolling 12 Months July 2016



Month	Refs	12 Mths	Ref Rate	Mth T Rate	Target	Variance	RAG
Aug-14	140	2558	568.4	211	601.6	-5.5%	G
Sep-14	254	2678	595.1	211	601.6	-1.1%	G
Oct-14	201	2595	576.7	211	601.6	-4.1%	G
Nov-14	237	2621	582.4	211	601.6	-3.2%	G
Dec-14	237	2632	584.9	220	601.6	-2.8%	G
Jan-15	213	2632	584.9	220	601.6	-2.8%	G
Feb-15	269	2684	596.4	220	601.6	-0.9%	G
Mar-15	303	1854	608.2	220	601.6	1.1%	A
Apr-15	319	2173	630.0	220	601.6	4.7%	G
May-15	418	2591	664.9	220	601.6	10.5%	G
Jun-15	505	3096	664.4	220	601.6	10.4%	G
Jul-15	538	3634	779.8	220	601.6	29.6%	G
Aug-15	314	3808	817.2	220	601.6	35.8%	G
Sep-15	426	3980	854.1	220	601.6	42.0%	G
Oct-15	448	4227	907.1	220	601.6	50.8%	R
Nov-15	539	4529	971.9	220	601.6	61.6%	R
Dec-15	393	4685	1005.4	220	601.6	67.1%	R
Jan-16	283	4755	1020.4	220	601.6	69.6%	R
Feb-16	227	4713	1011.4	220	601.6	68.1%	R
Mar-16	295	4705	1009.7	220	730.5	38.2%	R
Apr-16	242	4628	993.1	220	730.5	36.0%	R
May-16	276	4486	962.7	220	730.5	31.8%	R
Jun-16	329	4310	924.9	220	730.5	26.6%	R
Jul-16	242	4014	861.4	220	730.5	17.9%	R

CSC Commentary
 Our referral rate is higher than our Regional colleagues and this requires further investigation. The reduction in the number of contacts being moved through to referrals is starting to be reflected in this performance target. It is clear in the monthly report that the number of referrals being progressed is decreasing (YTD 40%) which is due to the direct impact of the extra scrutiny provided by the refocusing in MASH. This has meant that more contacts have been closed/diverted rather than progressing into referrals. This month there was a significant increase in referrals due to Operation Dunholt.

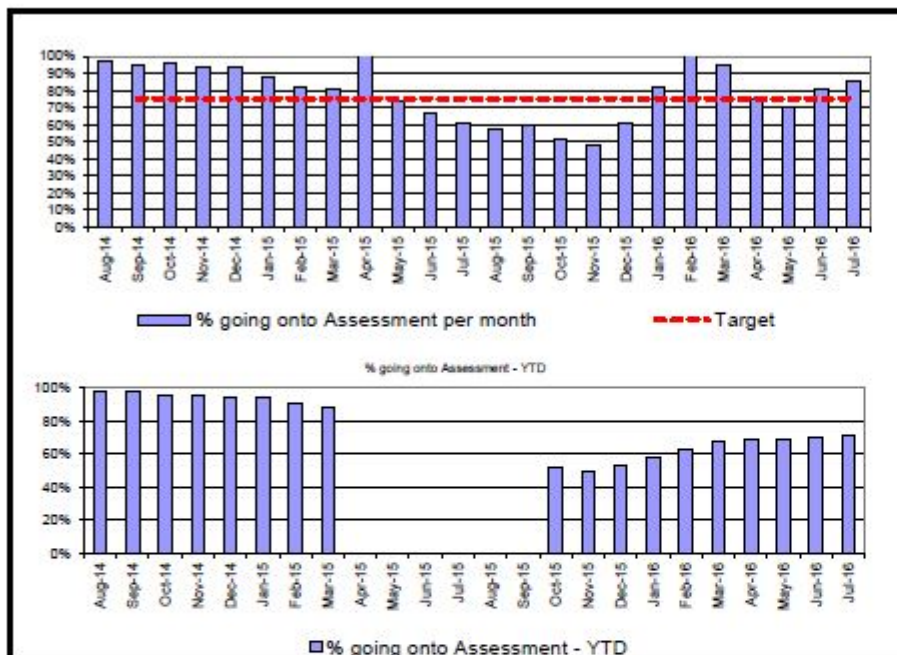
Definition
 Number of referrals (rolling 12 months) divided by the population of 0-17 year olds in Peterborough multiplied by 10,000
 Population for denominator: 46600

G <= 730.5 A= 730-745 R>745

Year	PCC Result	SN Result	ER Result	ENG Result
2013-14	577.7	730.5		573.0
2014-15	586.6	767.8	437.9	548.3
2015-16				

Chart 3

Referrals progressing to Single Assessment July 2016



Month	Assess	Refs	% asses	% YTD	Target	Var	RAG
Aug-14	136	140	97.1%	97.8%	75.1%	22%	G
Sep-14	241	254	94.9%	97.5%	75.1%	20%	G
Oct-14	192	201	95.5%	95.6%	75.1%	20%	G
Nov-14	223	237	94.1%	95.5%	75.1%	19%	G
Dec-14	221	237	93.2%	94.9%	75.1%	18%	G
Jan-15	187	213	87.8%	93.8%	75.1%	13%	G
Feb-15	220	289	81.8%	91.2%	75.1%	7%	G
Mar-15	243	303	80.2%	88.4%	75.1%	5%	G
Apr-15	342	319	107.2%	0.0%	75.1%	32%	G
May-15	309	418	73.9%	0.0%	75.1%	-1%	G
Jun-15	335	505	66.3%	0.0%	75.1%	-9%	G
Jul-15	324	538	60.2%	0.0%	75.1%	-15%	G
Aug-15	179	314	57.0%	0.0%	75.1%	-18%	G
Sep-15	254	426	59.6%	0.0%	75.1%	-15%	G
Oct-15	233	448	52.0%	52.0%	75.1%	-23%	G
Nov-15	260	539	48.2%	49.9%	75.1%	-27%	G
Dec-15	237	393	60.3%	52.9%	75.1%	-15%	G
Jan-16	232	283	82.0%	57.8%	75.1%	7%	R
Feb-16	237	227	104.4%	63.4%	75.1%	29%	R
Mar-16	279	295	94.6%	67.6%	75.1%	19%	R
Apr-16	180	242	74.4%	68.3%	75.1%	-1%	R
May-16	193	276	69.9%	68.5%	75.1%	-5%	R
Jun-16	265	329	80.5%	69.8%	75.1%	5%	R
Jul-16	206	242	85.1%	70.9%	75.1%	10%	A

YTD:	2,755	4,014	-	68.6%	75.1%	-6.5	R
------	-------	-------	---	-------	-------	------	---

Definition
 The percentage of children referred to children's social services departments whose cases go on to single assessments. The numerator is the number of single assessments started in the period recorded on ICMS. The denominator is the number of referrals in the period recorded on ICMS.

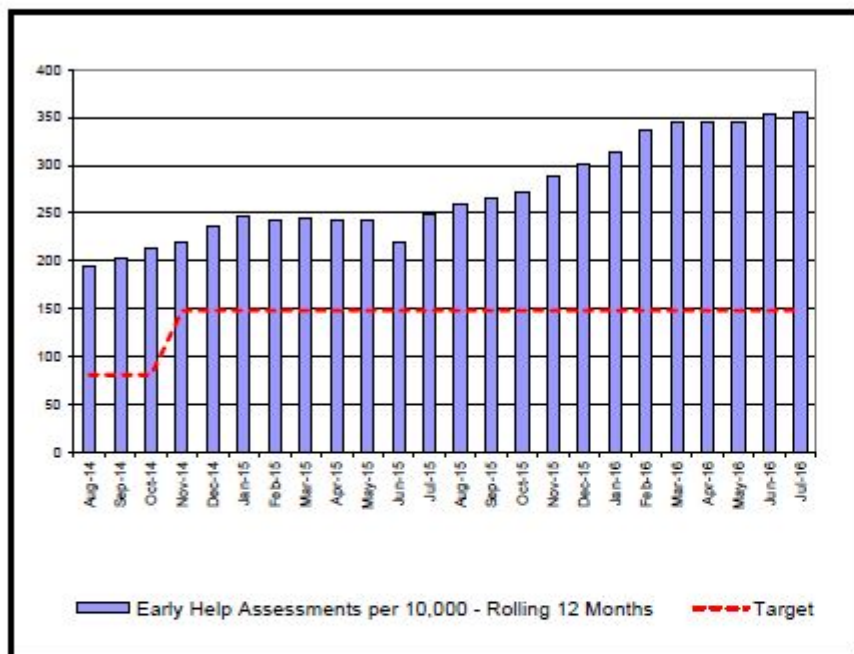


Year	PCC Result	SN Result	ENG Result
2012-13	84.4%	77.9%	74.4%
2013-14	20.1%	19.3%	19.4%
2014-15	39.0%	16.0%	23.0%

CSC Commentary
 Conversions to assessments has increased this month although it has moved to Amber as it moves closer to the 75% target set. This would suggest that there is a more robust application of threshold for statutory assessment.

Chart 4

Early Help Assessments per 10,000 - Rolling 12 Months July 2016



Month	EHAs	12 Mths	Rate
Aug-14	39	870	193.3
Sep-14	64	914	203.1
Oct-14	86	959	213.1
Nov-14	77	992	220.4
Dec-14	94	1064	236.9
Jan-15	113	1110	246.9
Feb-15	72	525	243.3
Mar-15	96	550	244.0
Apr-15	101	650	242.0
May-15	133	875	242.4
Jun-15	150	1025	220.0
Jul-15	138	1163	249.6
Aug-15	82	1208	258.8
Sep-15	95	1237	265.5
Oct-15	115	1266	271.7
Nov-15	158	1347	289.1
Dec-15	148	1401	300.6
Jan-16	169	1457	312.7
Feb-16	182	1567	336.3
Mar-16	132	1603	344.0
Apr-16	102	1604	344.2
May-16	137	1608	345.1
Jun-16	184	1642	352.4
Jul-16	156	1660	356.2

Target	Var.	RAG
80.8	139.3%	G
80.8	151.4%	G
80.8	163.8%	G
147.9	49.0%	G
147.9	60.2%	G
147.9	66.9%	G
147.9	64.5%	G
147.9	65.0%	G
147.9	63.6%	G
147.9	63.9%	G
147.9	48.7%	G
147.9	68.7%	G
147.9	75.0%	G
147.9	79.5%	G
147.9	83.7%	G
147.9	95.4%	G
147.9	103.3%	G
147.9	111.4%	G
147.9	127.4%	G
147.9	132.6%	G
147.9	132.7%	G
147.9	133.3%	G
147.9	138.2%	G
147.9	140.9%	G

CSC Commentary
 The number of Early Help Assessments initiated in June indicates a significant increase compared to the previous month (May). There has been a slight reduction in the number of these Early Help Assessments being initiated as a result of a step-down from a c&F assessment which shows a considerable increase in engagement from partners during this period. This is very promising. The June 2016 figure is also higher than for the same period 2015, with a further 21 being initiated.

Definition
 The rate is the number of new EHAs recorded in the previous 12 months divided by the population of 0-17 year olds in Peterborough multiplied by 10,000. The number of EHAs is taken from the local EHA tracker database and is not externally valid.

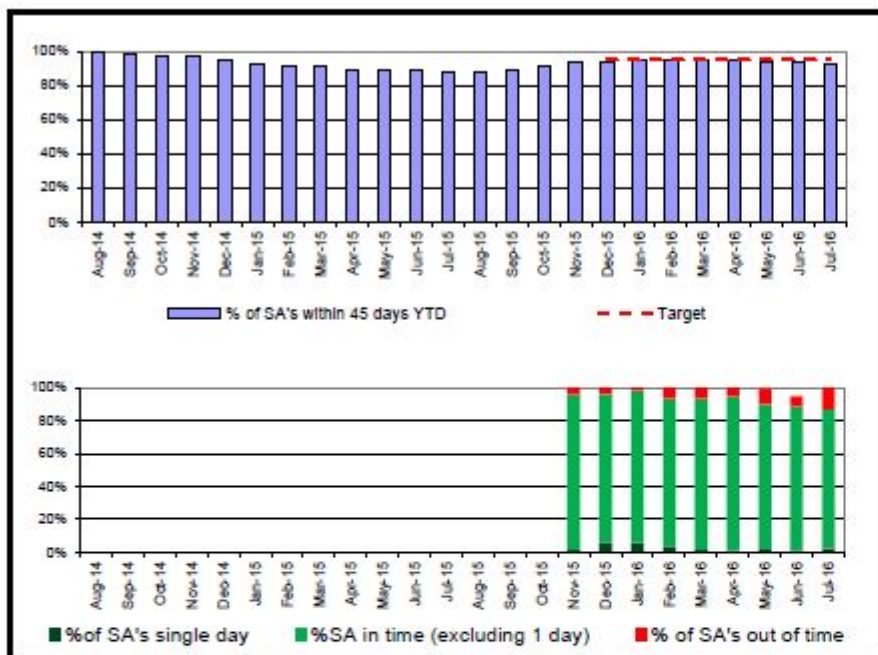
Population for denominator: 46600

G =TBC A =TBC R=TBC

Year	PCC Result	ER Result	ENG Result
2012/13	-	-	-
2013/14	-	-	-
2014/15	234.6	131.9	-

Chart 5

Single Assessment Timescales (within 45 working days) July 2016

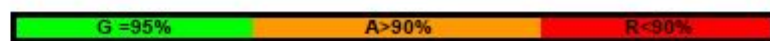


Month	SA 45	SA >45	SA 1 day	SA All	% Mnth	% YTD	Target	RAG
Aug-14	205	1	21	206	99.5%	99.7%		
Sep-14	224	8	32	232	96.6%	98.6%		
Oct-14	238	15	22	253	94.1%	97.3%		
Nov-14	190	10	36	200	95.0%	96.9%		
Dec-14	240	38	31	278	86.3%	94.7%		
Jan-15	275	42	56	317	86.8%	92.7%		
Feb-15	216	32	20	248	87.1%	91.8%		
Mar-15	238	29	31	267	89.1%	91.5%		
Apr-15	259	29	3	288	89.9%	89.5%	95.0%	
May-15	283	44	4	327	86.5%	89.0%	95.0%	A
Jun-15	296	41	10	337	87.8%	88.9%	95.0%	A
Jul-15	322	67	22	389	82.8%	88.1%	95.0%	R
Aug-15	270	34	6	304	88.8%	88.1%	95.0%	R
Sep-15	242	19	8	261	92.7%	88.5%	95.0%	R
Oct-15	248	24	10	272	91.2%	91.2%	95.0%	R
Nov-15	229	10	4	239	95.8%	93.3%	95.0%	R
Dec-15	210	9	14	219	95.9%	94.1%	95.0%	R
Jan-16	227	4	14	231	98.3%	95.1%	95.0%	R
Feb-16	193	14	8	207	93.2%	94.8%	95.0%	A
Mar-16	214	15	4	229	93.4%	94.6%	95.0%	A
Apr-16	229	13	3	242	94.6%	94.6%	95.0%	A
May-16	216	23	5	240	90.0%	94.0%	95.0%	A
Jun-16	153	11	2	173	88.4%	93.5%	95.0%	A
Jul-16	184	28	5	212	86.8%	92.9%	95.0%	A

YTD:	2615	204	83	2829	--	92.4%	95.0%	A
------	------	-----	----	------	----	-------	-------	---

CSC Commentary
 Given pressures within the service there has been a slight dip in terms of assessments being completed within 45 days and whilst the year to date figure is still slightly short of the 95% target, it is on a clear upward trajectory and now sits at 92.4%
 The in-month performance in July has dipped on June performance with 92.9% of single assessments being completed within 45 days. The RAG rating however continues to be amber as the year to date performance is still below 95% target.

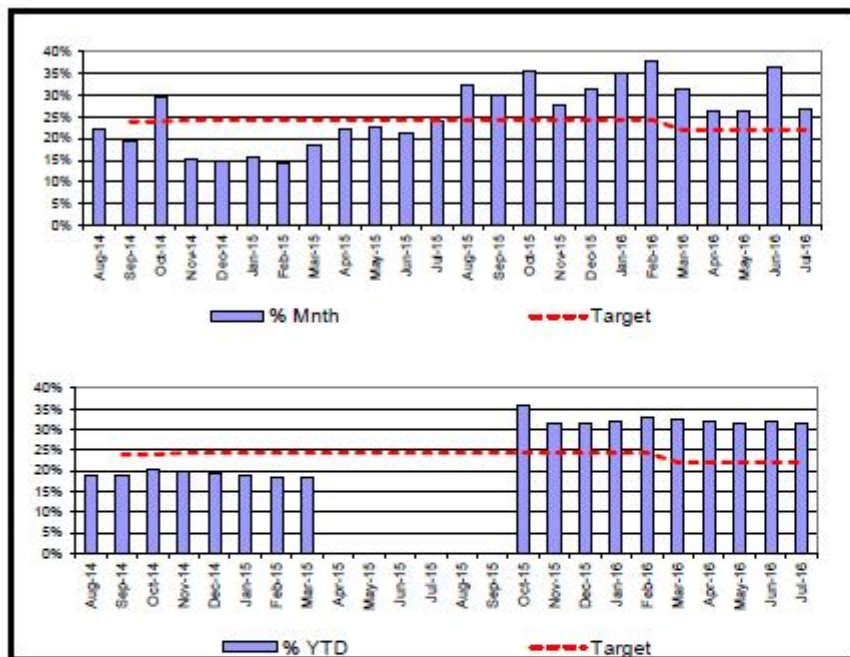
Definition
 The number of single assessments YTD completed within 45 working days from the start of the referral start, as a percentage of the number of single assessments completed YTD.



Year	PCC Re	SN Result	ER Result	ENG Result
2012-13				
2013-14				
2014-15	90.0%	79.0%	88.0%	81.5%

Chart 6

Re-referrals within 12 months July 2016

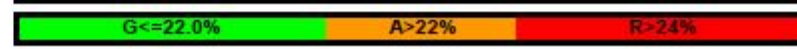


Month	Re-Refs	Refs	% Mnth	% YTD	Target	Var	RAG
Aug-14	31	140	22.1%	18.9%	23.9%	-5.0	G
Sep-14	49	254	19.3%	19.0%	23.9%	-4.9	G
Oct-14	59	201	29.4%	20.4%	23.9%	-3.5	G
Nov-14	36	237	15.2%	19.7%	24.3%	-4.6	G
Dec-14	35	237	14.8%	19.1%	24.3%	-5.2	G
Jan-15	33	213	15.5%	18.7%	24.3%	-5.6	G
Feb-15	39	269	14.5%	18.3%	24.3%	-6.0	G
Mar-15	56	303	18.5%	18.3%	24.3%	-6.0	G
Apr-15	70	319	21.9%	0.0%	24.3%	-24.3	G
May-15	94	418	22.5%	0.0%	24.3%	-24.3	G
Jun-15	106	505	21.0%	0.0%	24.3%	-24.3	G
Jul-15	129	538	24.0%	0.0%	24.3%	-24.3	G
Aug-15	101	314	32.2%	0.0%	24.3%	-24.3	G
Sep-15	127	426	29.8%	0.0%	24.3%	-24.3	G
Oct-15	160	448	35.7%	35.7%	24.3%	11.4	A
Nov-15	150	539	27.8%	31.4%	24.3%	7.1	R
Dec-15	123	393	31.3%	31.4%	24.3%	7.1	R
Jan-16	100	283	35.3%	32.1%	24.3%	7.8	R
Feb-16	86	227	37.9%	32.8%	24.3%	8.5	R
Mar-16	93	295	31.5%	32.8%	22.0%	10.6	R
Apr-16	64	242	26.4%	32.0%	22.0%	10.0	R
May-16	73	276	26.4%	31.4%	22.0%	9.4	R
Jun-16	120	329	36.5%	32.0%	22.0%	10.0	R
Jul-16	65	242	26.9%	31.6%	22.0%	9.6	R

CSC Commentary
 There has been a significant decrease in the re-referral rate this month but this has little impact on the YTD figure which sits at 31% which is much higher than the target set (22%). Reviewing the re-referrals on a weekly basis over the month suggests that with the adjustment in Liquid Logic reporting this figure could be significantly reduced to be more in line with our colleagues in the Eastern Region. Liquid Logic are working on this currently as part of the improvement programme. A more detailed scrutiny of re-referrals in the coming month will shed light on whether there is any other response that would also contribute to a reduction in the re-referral rate.

YTD:	1,262	4,014	--	31.4%	22.0%	9.4	R
-------------	--------------	--------------	-----------	--------------	--------------	------------	----------

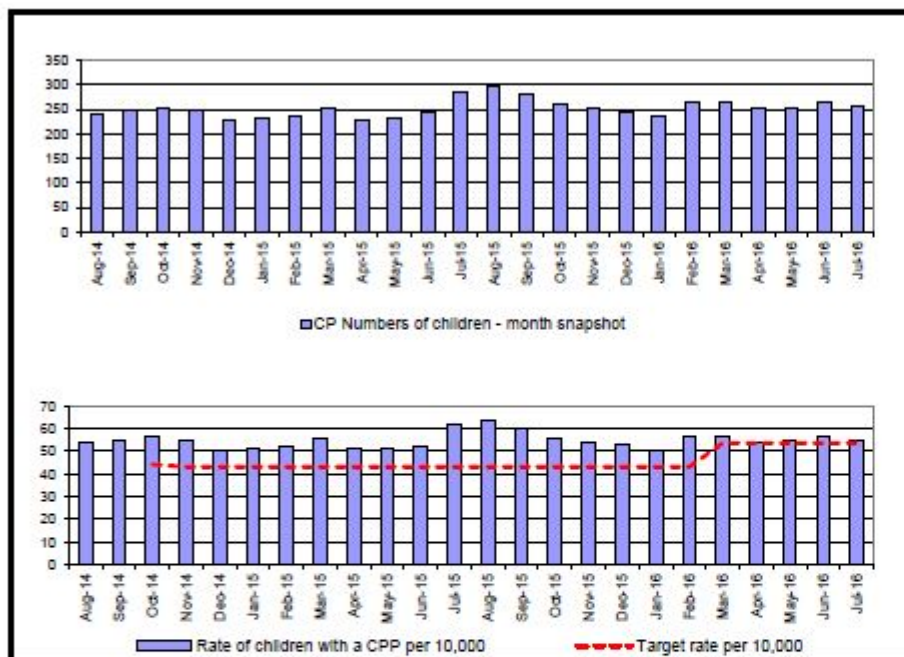
Definition
 The percentage of referrals where a previous referral has occurred within the last 12 months. If a child has more than one re-referral in the year, each one will be counted.



Year	PCC Result	SN Result	ENG Result
2012-13	33.5%	27.4%	24.9%
2013-14	21.8%	26.0%	23.4%
2014-15	18.3%	25.8%	24.0%

Chart 7

Number of Children with a Child Protection Plan per 10,000 July 2016



Month	CP	Pop.	Rate	Target	Variance	RAG
Aug-14	241	45000	53.6	44.2	21.2%	G
Sep-14	246	45000	54.7	44.2	23.7%	R
Oct-14	253	45000	56.2	44.2	27.2%	R
Nov-14	246	45000	54.7	43.1	26.8%	R
Dec-14	228	45000	50.7	43.1	17.6%	R
Jan-15	231	45000	51.3	43.1	19.1%	R
Feb-15	236	45000	52.4	43.1	21.7%	A
Mar-15	252	45000	56.0	43.1	29.9%	R
Apr-15	229	45000	50.9	43.1	18.1%	R
May-15	231	45000	51.3	43.1	19.1%	R
Jun-15	244	46600	52.4	43.1	21.5%	R
Jul-15	286	46600	61.4	43.1	42.4%	G
Aug-15	298	46600	63.9	43.1	48.4%	G
Sep-15	279	46600	59.9	43.1	38.9%	G
Oct-15	259	46600	55.6	43.1	29.0%	R
Nov-15	252	46600	54.1	43.1	25.5%	R
Dec-15	245	46600	52.6	43.1	22.0%	R
Jan-16	237	46600	50.9	43.1	18.0%	R
Feb-16	265	46600	56.9	43.1	31.9%	A
Mar-16	265	46600	56.9	53.6	6.1%	G
Apr-16	252	46600	54.1	53.6	0.9%	G
May-16	254	46600	54.5	53.6	1.7%	A
Jun-16	264	46600	56.7	53.6	5.7%	A
Jul-16	256	46600	54.9	53.6	2.5%	A

CSC Commentary
 A slight decrease this month to broadly just above our statistical neighbour and own target is positive. When looking at the last 12 months the average is 260 down from 263 last month with the expectation to reduce CP numbers to CIN where safe and appropriate to do so.

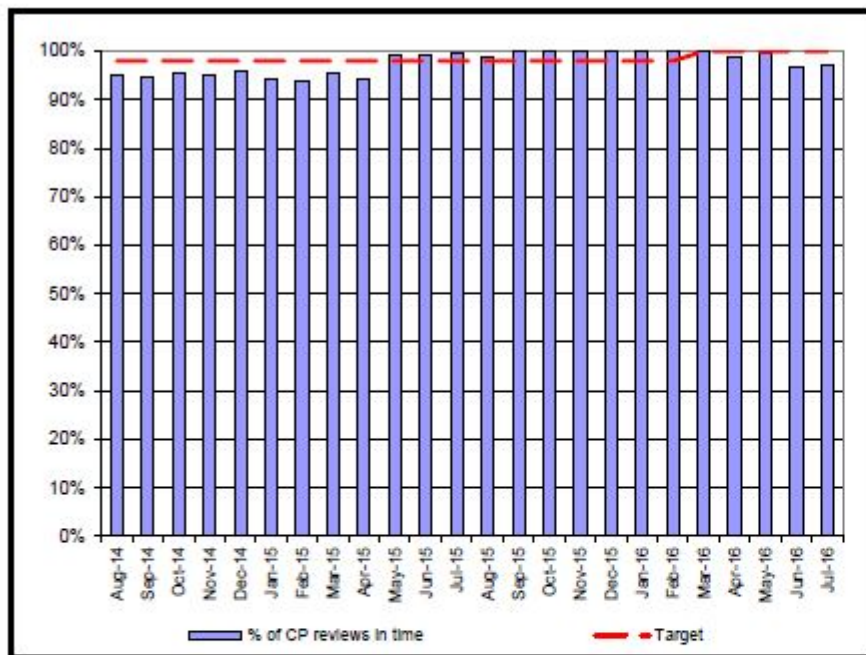
Definition
 Number of children with a current child protection plan divided by the population of 0-17 year olds in Peterborough multiplied by 10,000.
 The number of children is taken as a snapshot count at the end of each month
 Population for denominator: 46600

G = 53.6 A < 55 R > 55

Year	PCC Result	SN Result	ENG Result
2012-13	60.3	43.1	37.9
2013-14	52.4	53.9	42.1
2014-15	49.6	55.5	42.9

Chart 8

Child Protection Reviews within timescales July 2016



Month	Num.	Denom	% of CP	Target	Variance	RAG
Aug-14	156	164	95.1%	98.0%	-2.9	A
Sep-14	148	156	94.9%	98.0%	-3.1	A
Oct-14	149	156	95.5%	98.0%	-2.5	A
Nov-14	161	169	95.3%	98.0%	-2.7	A
Dec-14	163	170	95.9%	98.0%	-2.1	A
Jan-15	161	171	94.2%	98.0%	-3.8	A
Feb-15	165	176	93.8%	98.0%	-4.3	A
Mar-15	146	153	95.4%	98.0%	-2.6	A
Apr-15	131	139	94.2%	98.0%	-3.8	A
May-15	123	124	99.2%	98.0%	1.2	A
Jun-15	139	140	99.3%	98.0%	1.3	A
Jul-15	164	165	99.4%	98.0%	1.4	A
Aug-15	165	167	98.8%	98.0%	0.8	A
Sep-15	177	177	100.0%	98.0%	2.0	A
Oct-15	211	211	100.0%	98.0%	2.0	A
Nov-15	207	207	100.0%	98.0%	2.0	A
Dec-15	198	198	100.0%	98.0%	2.0	G
Jan-16	175	175	100.0%	98.0%	2.0	G
Feb-16	185	185	100.0%	98.0%	2.0	G
Mar-16	145	145	100.0%	100.0%	0.0	G
Apr-16	190	192	99.0%	100.0%	-1.0	G
May-16	171	172	99.4%	100.0%	-0.6	G
Jun-16	172	178	96.6%	100.0%	-3.4	G
Jul-16	173	178	97.2%	100.0%	-2.8	A

CSC Commentary
 There continues to be strong performance in this area, with a slight decrease this month but overall expectations are to move back to 100% compliant

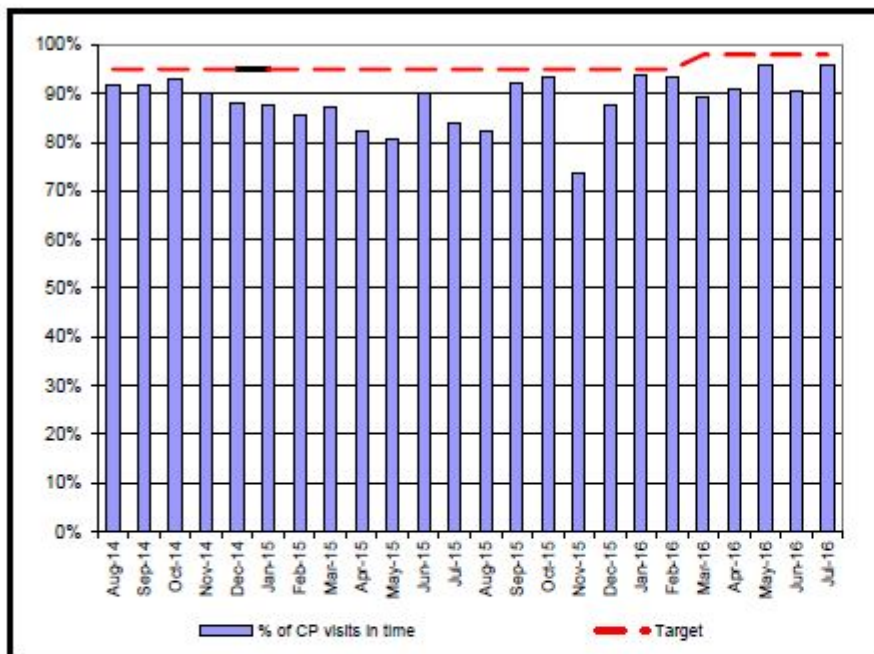
Definition
 The percentage of children with a Child Protection Plan for at least the previous three months, reviewed within the required timescales.

Legend:
G = 100% A >98% <100% R <98%

Year	PCC Result	SN Result	ENG Result
2012-13	98.3%	97.8%	96.2%
2013-14	95.8%	96.0%	94.6%
2014-15	93.4%	91.7%	94.0%

Chart 9

Child protection statutory visits in time July 2016



Month	Num.	Denom.	% of CP	Target	Variance	RAG
Aug-14	193	210	91.9%	95.0%	-3.1	A
Sep-14	202	220	91.8%	95.0%	-3.2	A
Oct-14	203	218	93.1%	95.0%	-1.9	G
Nov-14	210	233	90.1%	95.0%	-4.9	G
Dec-14	199	226	88.1%	95.0%	-6.9	A
Jan-15	178	203	87.7%	95.0%	-7.3	A
Feb-15	171	200	85.5%	95.0%	-9.5	A
Mar-15	178	204	87.3%	95.0%	-7.7	A
Apr-15	165	201	82.1%	95.0%	-12.9	A
May-15	169	209	80.9%	95.0%	-14.1	A
Jun-15	191	212	90.1%	95.0%	-4.9	A
Jul-15	195	232	84.1%	95.0%	-10.9	R
Aug-15	225	274	82.1%	95.0%	-12.9	R
Sep-15	249	270	92.2%	95.0%	-2.8	R
Oct-15	231	247	93.5%	95.0%	-1.5	R
Nov-15	174	236	73.7%	95.0%	-21.3	R
Dec-15	206	235	87.7%	95.0%	-7.3	R
Jan-16	195	208	93.8%	95.0%	-1.3	R
Feb-16	226	242	93.4%	95.0%	-1.6	R
Mar-16	216	242	89.3%	98.0%	-8.7	R
Apr-16	220	242	90.9%	98.0%	-7.1	R
May-16	210	219	95.9%	98.0%	-2.1	R
Jun-16	214	236	90.7%	98.0%	-7.3	R
Jul-16	226	236	95.8%	98.0%	-2.2	R

CSC Commentary

There has been a steady increase in the number of CP visits carried out over some months, with a drop last month due to some missed visits by staff when families are out and the timeliness to repeat visits not being in timescale to ensure the visit was undertaken in the expected 4 weeks. Managers have been tasked to ensure future visits are planned with some capacity to ensure a missed visit followed up will still be within the expected 4 weeks, which has been the case and an improvement in this area.

Definition

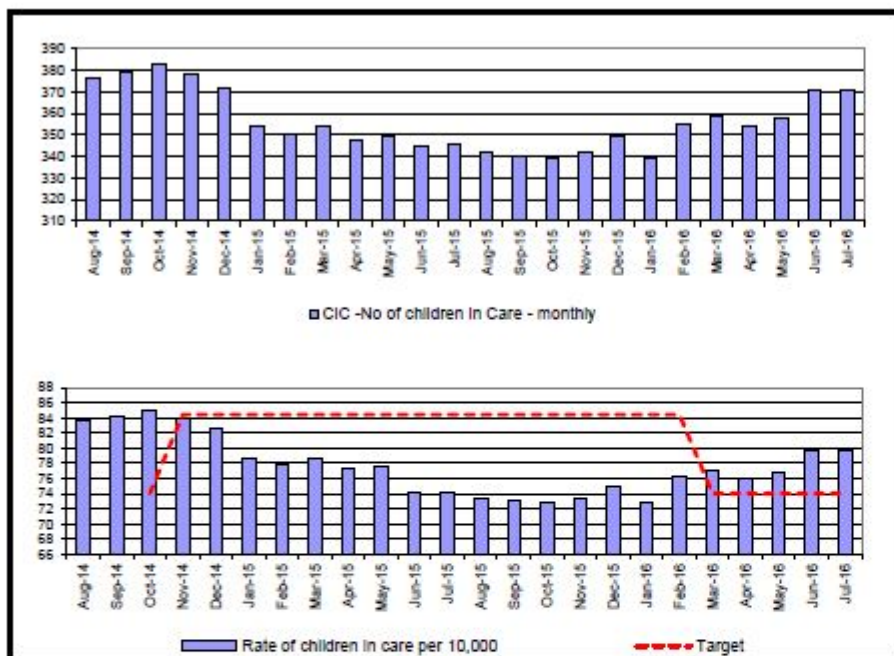
Of all children subject to a child protection plan for more than 4 weeks, the number and percentage of visits that were done within the 4 week deadline. This is snapshot data taken at the month end.

G = 98%	A > 96-98%	R < 96%
---------	------------	---------

Chart 10

Number of Children in Care per 10,000

July 2016



Month	CiC -	Pop.	Rate of	Target	Variance	RAG
Aug-14	376	45000	83.6	74.0	12.9%	R
Sep-14	379	45000	84.2	74.0	13.8%	R
Oct-14	383	45000	85.1	74.0	15.0%	R
Nov-14	378	45000	84.0	84.4	-0.5%	G
Dec-14	372	45000	82.7	84.4	-2.1%	G
Jan-15	354	45000	78.7	84.4	-6.8%	G
Feb-15	350	45000	77.8	84.4	-7.8%	G
Mar-15	354	45000	78.7	84.4	-6.8%	G
Apr-15	348	45000	77.3	84.4	-8.4%	G
May-15	349	45000	77.6	84.4	-8.1%	G
Jun-15	345	46600	74.0	84.4	-12.3%	G
Jul-15	346	46600	74.2	84.4	-12.0%	A
Aug-15	342	46600	73.4	84.4	-13.0%	A
Sep-15	340	46600	73.0	84.4	-13.6%	G
Oct-15	339	46600	72.7	84.4	-13.8%	A
Nov-15	342	46600	73.4	84.4	-13.0%	G
Dec-15	349	46600	74.9	84.4	-11.3%	G
Jan-16	339	46600	72.7	84.4	-13.8%	G
Feb-16	355	46600	76.2	84.4	-9.7%	G
Mar-16	359	46600	77.0	74.0	4.1%	A
Apr-16	354	46600	76.0	74.0	2.7%	G
May-16	358	46600	76.8	74.0	3.8%	A
Jun-16	371	46600	79.6	74.0	7.6%	A
Jul-16	371	46600	79.6	74.0	7.6%	A

CSC Commentary

The number of CiC at the end of July 2016 has remained stable at 371. This is after an increase in numbers for three consecutive months. Although this is above the target rate of 74 it remains in the amber RAG rating and indicates that measures to curb the rise in the care population are beginning to have an early impact.

Definition

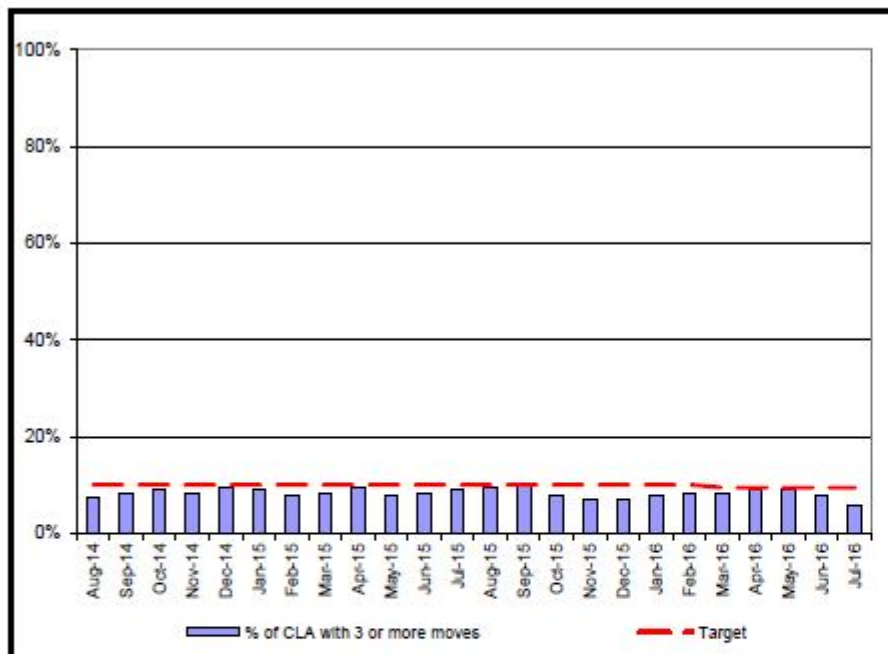
Number of children in care divided by the population of 0-17 year olds in Peterborough multiplied by 10,000
 The number of children in care is taken as a snapshot count at the end of each month
 Population for denominator: 46600

G = 74.0	A > 74.0	R > 79.4
----------	----------	----------

Year	PCC Result	SN Result	ENG Result
2012-13	78.0	78.0	60.0
2013-14	80.0	77.2	60.0
2014-15	74.0	79.4	60.0

Chart 11

Placement Stability: 3 or more placements during previous 12 months for CiC July 2016

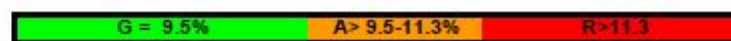


Month	Num.	Denom.	% of CLA with	Target	Variance	RAG
Aug-14	28	376	7.4%	10.1%	-2.7	G
Sep-14	32	379	8.4%	10.1%	-1.7	G
Oct-14	35	383	9.1%	10.1%	-1.0	G
Nov-14	32	378	8.5%	10.1%	-1.6	G
Dec-14	35	372	9.4%	10.1%	-0.7	G
Jan-15	32	354	9.0%	10.1%	-1.1	G
Feb-15	28	350	8.0%	10.1%	-2.1	G
Mar-15	30	354	8.5%	10.1%	-1.6	G
Apr-15	33	348	9.5%	10.1%	-0.6	G
May-15	28	349	8.0%	10.1%	-2.1	G
Jun-15	29	345	8.4%	10.1%	-1.7	G
Jul-15	32	348	9.2%	10.1%	-0.9	G
Aug-15	33	342	9.8%	10.1%	-0.5	G
Sep-15	35	340	10.3%	10.1%	0.2	G
Oct-15	26	339	7.7%	10.1%	-2.4	G
Nov-15	24	342	7.0%	10.1%	-3.1	A
Dec-15	25	349	7.2%	10.1%	-2.9	A
Jan-16	26	339	7.7%	10.1%	-2.4	G
Feb-16	29	355	8.2%	10.1%	-1.9	G
Mar-16	30	359	8.4%	9.5%	-1.1	G
Apr-16	32	354	9.0%	9.5%	-0.5	G
May-16	32	358	8.9%	9.5%	-0.6	G
Jun-16	29	371	7.8%	9.5%	-1.7	G
Jul-16	21	371	5.7%	9.5%	-3.8	G

CSC Commentary
 The downward trend in this indicator over the last few months has been maintained, demonstrating continued good performance. The percentage of children with 3 or more moves is now at 5.7%, which is a variance of 3.8 below our target and keeps this in the green RAG rating band.

Definition
 The percentage of children in care at any given time with three or more placements during the last 12 months.

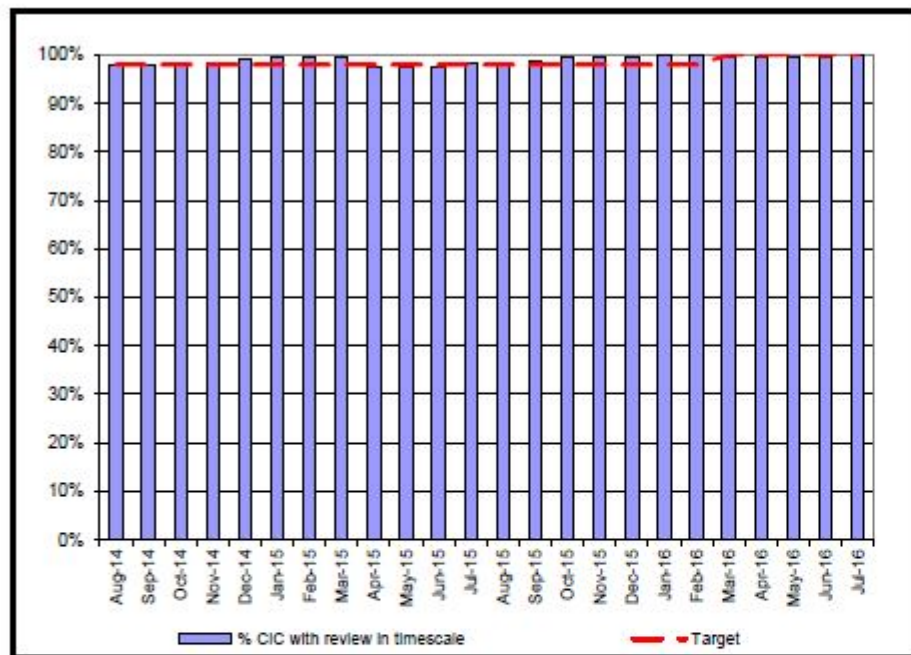
Population for denominator: 46600



Year	PCC Result	SN Result	ENG Result
2012-13	11.1%	10.3%	11.1%
2013-14	9.0%	11.3%	11.0%
2014-15	8.5%		

Chart 12

Children in Care Reviews held within timescales July 2016



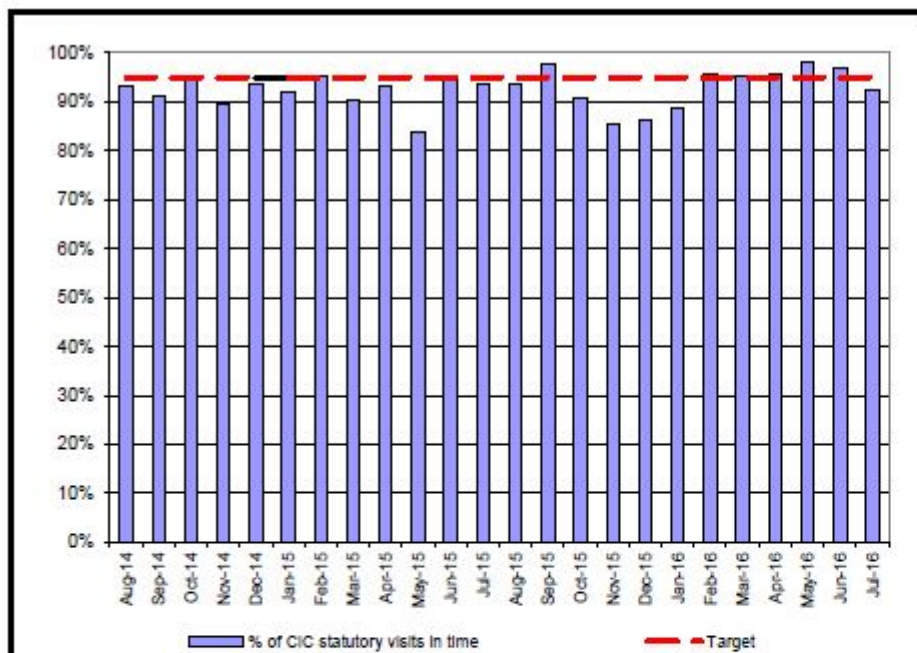
Month	Num.	Denom.	% CiC	Target	Variance	RAG
Aug-14	360	368	97.8%	98.0%	-0.2	G
Sep-14	364	371	98.1%	98.0%	0.1	G
Oct-14	360	366	98.4%	98.0%	0.4	A
Nov-14	363	369	98.4%	98.0%	0.4	G
Dec-14	386	389	99.2%	98.0%	1.2	A
Jan-15	345	347	99.4%	98.0%	1.4	A
Feb-15	337	339	99.4%	98.0%	1.4	A
Mar-15	342	343	99.7%	98.0%	1.7	A
Apr-15	330	338	97.6%	98.0%	-0.4	G
May-15	330	339	97.3%	98.0%	-0.7	G
Jun-15	322	330	97.6%	98.0%	-0.4	G
Jul-15	326	332	98.2%	98.0%	0.2	R
Aug-15	331	337	98.2%	98.0%	0.2	R
Sep-15	330	334	98.8%	98.0%	0.8	R
Oct-15	326	327	99.7%	98.0%	1.7	A
Nov-15	335	336	99.7%	98.0%	1.7	A
Dec-15	344	345	99.7%	98.0%	1.7	A
Jan-16	329	329	100.0%	98.0%	2.0	A
Feb-16	333	333	100.0%	98.0%	2.0	A
Mar-16	344	345	99.7%	100.0%	-0.3	A
Apr-16	347	348	99.7%	100.0%	-0.3	G
May-16	350	351	99.7%	100.0%	-0.3	G
Jun-16	347	348	99.7%	100.0%	-0.3	A
Jul-16	365	366	99.7%	100.0%	-0.3	A

CSC Commentary
 This indicator is measured on a rolling 12 month basis and following a small dip in performance in March, this will continue to be 0.3% below the 100% target for this current counting period. However, performance has remained steady, evidencing that statutory reviews remain an area of priority and that there have been no further reviews missed, despite an increase in the number of children requiring reviews.

Definition
 The percentage of Looked after children for at least one month, whose case was reviewed within the required timescales.
 The denominator is children who are LAC for at least one month at the end of the reporting month. The numerator is the number of children who have not had a review in the last 12 months recorded as outside of timescale.

G = 100% **A > 98%** **R < 98%**

Chart 13 – Visits to Children in Care in Timescale



Month	Num.	Denom.	% of	Target	Variance	RAG
Aug-14	333	357	93.3%	95.0%	-1.7	A
Sep-14	325	356	91.3%	95.0%	-3.7	G
Oct-14	346	363	95.3%	95.0%	0.3	G
Nov-14	323	360	89.7%	95.0%	-5.3	A
Dec-14	337	360	93.6%	95.0%	-1.4	A
Jan-15	319	346	92.2%	95.0%	-2.8	A
Feb-15	317	333	95.2%	95.0%	0.2	G
Mar-15	302	334	90.4%	95.0%	-4.6	A
Apr-15	307	329	93.3%	95.0%	-1.7	A
May-15	278	332	83.7%	95.0%	-11.3	G
Jun-15	308	324	95.1%	95.0%	0.1	G
Jul-15	300	320	93.8%	95.0%	-1.3	A
Aug-15	311	332	93.7%	95.0%	-1.3	R
Sep-15	320	328	97.6%	95.0%	2.6	G
Oct-15	295	325	90.8%	95.0%	-4.2	A
Nov-15	285	334	85.3%	95.0%	-9.7	A
Dec-15	286	332	86.1%	95.0%	-8.9	G
Jan-16	287	324	88.6%	95.0%	-6.4	A
Feb-16	313	327	95.7%	95.0%	0.7	R
Mar-16	318	334	95.2%	95.0%	0.2	R
Apr-16	333	348	95.7%	95.0%	0.7	R
May-16	339	346	98.0%	95.0%	3.0	G
Jun-16	327	337	97.0%	95.0%	2.0	G
Jul-16	327	354	92.4%	95.0%	-2.6	G

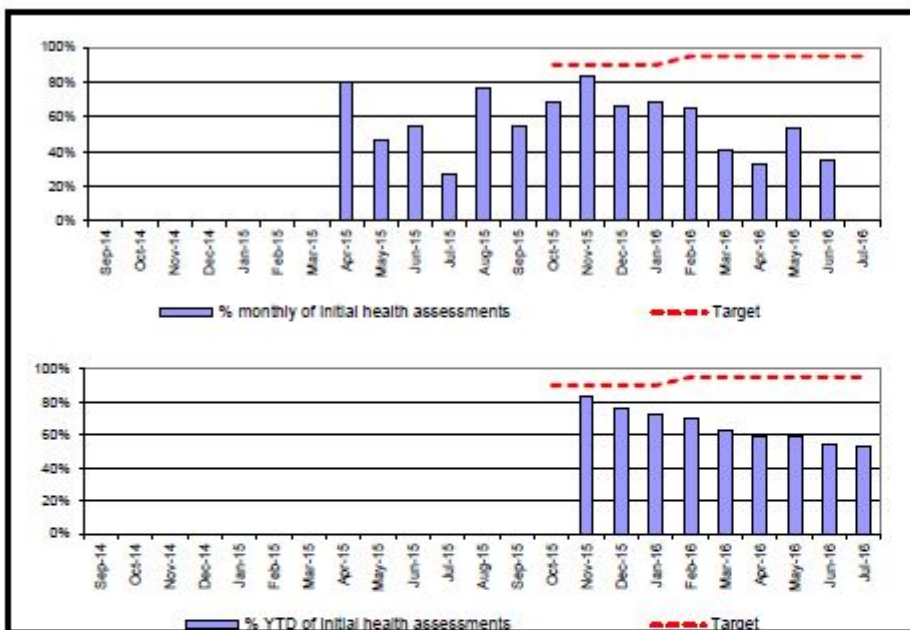
CSC Commentary
 Statutory visits within timescale have had a decrease in performance this month, which has been impacted by worker absence due to both illness and staff vacancies. Another factor is the beginning of the school holiday period, with some foster carers going away on vacation, complicating the statutory visits schedule. In addition, some older teenagers continue to not co-operating with visiting requirements, absenting themselves from placement when visits are planned in advance. However, managers continue to remind workers of the expectations in ensuring full compliance with visits and that they are planned ahead of the actual date to allow for rearrangements to be made within the minimum time period allowed.

Definition
 Of all Children in Care that have been looked after for more than 6 weeks, the number and percentage of visits that were completed within the 6 week deadline (or within three months for those Children in Care that have been looked after for more than 12 months and whose placement is deemed to be permanent). This is snapshot data taken at the month end.

G = 95% A > 90% R < 90%

Chart 14

Initial health assessments completed within 20 working days of child entering care July 2016



Month	Init.HA	CiC St	%	% YTD	Target	Var	RAG
Sep-14							
Oct-14							
Nov-14							
Dec-14							
Jan-15							
Feb-15							
Mar-15							
Apr-15	8	10	80.0%	0.0%			
May-15	6	13	46.2%	0.0%			
Jun-15	12	22	54.5%	0.0%			
Jul-15	4	15	26.7%	0.0%			
Aug-15	10	13	76.9%	0.0%			
Sep-15	6	11	54.5%	0.0%			
Oct-15	11	16	68.8%	0.0%	90.0%	-90.0	R
Nov-15	10	12	83.3%	83.3%	90.0%	-6.7	R
Dec-15	6	9	66.7%	76.2%	90.0%	-13.8	R
Jan-16	13	19	68.4%	72.5%	90.0%	-17.5	R
Feb-16	13	20	65.0%	70.0%	95.0%	-25.0	R
Mar-16	9	22	40.9%	62.2%	95.0%	-32.8	R
Apr-16	3	9	33.3%	59.3%	95.0%	-35.7	R
May-16	7	13	53.8%	58.7%	95.0%	-36.3	R
Jun-16	9	26	34.6%	53.8%	95.0%	-41.2	R
Jul-16	0	2	0.0%	53.0%	95.0%	-42.0	R

YTD:	97	172	--	56.4%	95.0%	-38.6	R
-------------	-----------	------------	-----------	--------------	--------------	--------------	----------

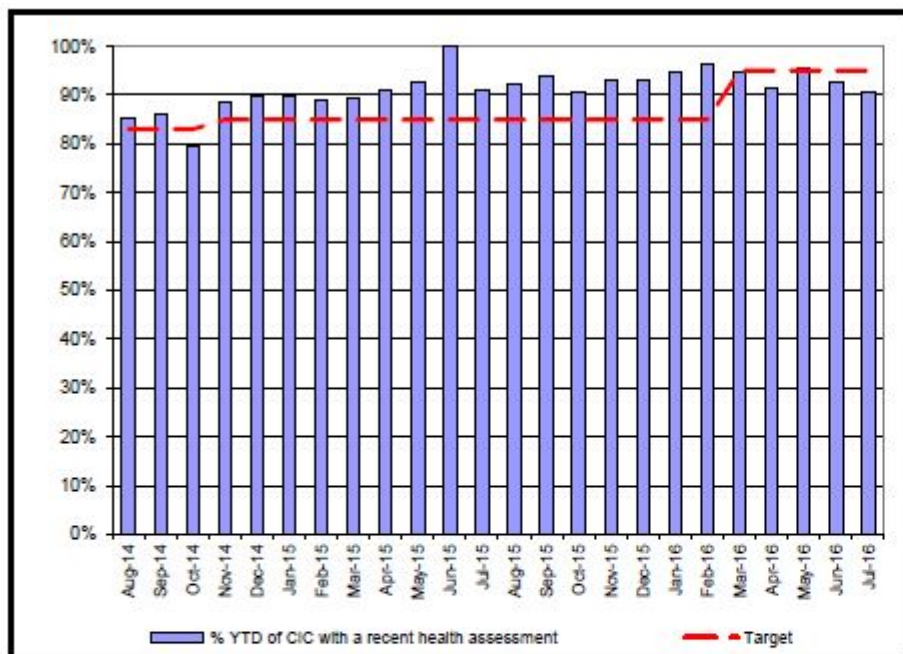
CSC Commentary
 The number of Initial Health Assessments completed in July was 10, this accounts for 50% of assessments being completed within timescale. The reasons for the 5 out of timescale are as follows: 1 x baby in special care, late consent received by health. 2 x siblings late consent of one day received by health, 1 x young person who was missing and subsequently refused his first appointment. 1 x young person who didn't attend their health appointment. 1 x outstanding health assessment for a young person who was missing from care and therefore his assessment could not take place. The quality of IHA referrals remains inconsistent and social workers are reminded of the need to improve performance in this area, referral and consent forms are still being sent late. IHAs will be an agenda item on each team meeting agenda.

Definition
 The number of children becoming looked after that have an initial health assessment recorded within 20 working days of the child entering care. The number of children is measured one month in arrears to enable time for the 20 day period to elapse and excludes cases where the episode of care was closed within 20 days and also children entering care because they have been placed on remand (because the remand institution is responsible for completing the initial health assessment).

G >= 95%	A > 85 -95%	R < 85%
--------------------	-----------------------	-------------------

Chart 15

Health of Children in Care - Annual Health Assessments July 2016



Month	Num.	Denom.	% YTD	Target	Variance	RAG
Aug-14	226	265	85.3%	83.0%	2.3	G
Sep-14	230	267	86.1%	83.0%	3.1	G
Oct-14	205	258	79.5%	83.0%	-3.5	G
Nov-14	232	262	88.5%	85.0%	3.5	G
Dec-14	239	266	89.8%	85.0%	4.8	G
Jan-15	227	253	89.7%	85.0%	4.7	A
Feb-15	224	252	88.9%	85.0%	3.9	A
Mar-15	229	256	89.5%	85.0%	4.5	G
Apr-15	232	255	91.0%	85.0%	6.0	G
May-15	237	256	92.6%	85.0%	7.6	A
Jun-15	253	253	100.0%	85.0%	15.0	G
Jul-15	219	241	90.9%	85.0%	5.9	A
Aug-15	221	240	92.1%	85.0%	7.1	A
Sep-15	224	239	93.7%	85.0%	8.7	G
Oct-15	210	232	90.5%	85.0%	5.5	A
Nov-15	216	232	93.1%	85.0%	8.1	A
Dec-15	212	228	93.0%	85.0%	8.0	A
Jan-16	211	223	94.6%	85.0%	9.6	A
Feb-16	210	218	96.3%	85.0%	11.3	A
Mar-16	212	224	94.6%	95.0%	-0.4	A
Apr-16	211	231	91.3%	95.0%	-3.7	A
May-16	230	241	95.4%	95.0%	0.4	G
Jun-16	215	232	92.7%	95.0%	-2.3	A
Jul-16	207	228	90.8%	95.0%	-4.2	A

CSC Commentary
 Performance has slipped again this month by just under 2% and now stands at 90.8% against a target rate of 95%. There are two main factors that impact consistently on this indicator: the first is a significant number of older teenagers who continue to refuse assessments despite repeated efforts by staff to get them to engage with this process and the other is the lengthy delay in the completed health assessments being processed by Health, sent over to CSCC and then loaded onto our LL system for them to count in our performance figures. Social workers will continue to attempt to get young people to attend for their health assessment and the HoS will look into the factors causing delay in recoding with a view to reducing these.

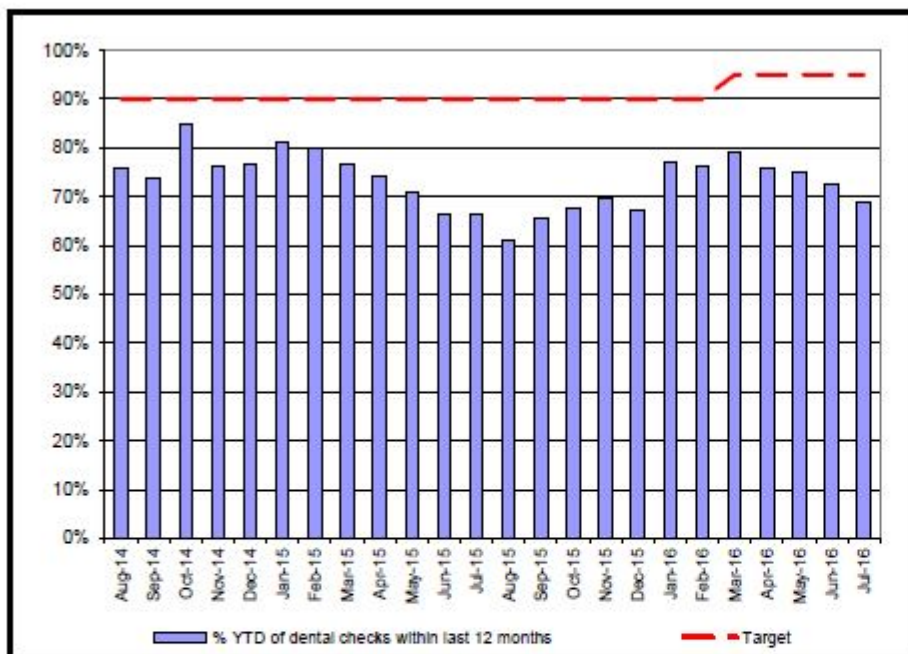
Definition
 Of the children who had been in care for at least 12 months the proportion who had an annual health assessment during the previous 12 months.



Year	PCC Result	SN Result	ENG Result
2012-13	85.4%	85.0%	87.3%
2013-14	93.9%	89.1%	88.4%
2014 -15			

Chart 16

Children in care (aged 3-17 years) with dental checks held within previous 12 months July 2016



Month	Num.	Denom.	% YTD	Target	Variance	RAG
Aug-14	239	315	75.9%	90.0%	-14.1	R
Sep-14	232	315	73.7%	90.0%	-16.3	R
Oct-14	265	312	84.9%	90.0%	-5.1	A
Nov-14	236	310	76.1%	90.0%	-13.9	R
Dec-14	237	309	76.7%	90.0%	-13.3	R
Jan-15	240	296	81.1%	90.0%	-8.9	R
Feb-15	231	289	79.9%	90.0%	-10.1	R
Mar-15	225	294	76.5%	90.0%	-13.5	R
Apr-15	213	287	74.2%	90.0%	-15.8	R
May-15	208	291	70.8%	90.0%	-19.2	A
Jun-15	195	293	66.8%	90.0%	-23.4	R
Jul-15	194	292	66.4%	90.0%	-23.6	R
Aug-15	176	289	60.9%	90.0%	-29.1	A
Sep-15	191	291	65.8%	90.0%	-24.4	R
Oct-15	196	289	67.8%	90.0%	-22.2	R
Nov-15	204	293	69.8%	90.0%	-20.4	R
Dec-15	198	295	67.1%	90.0%	-22.9	R
Jan-16	222	288	77.1%	90.0%	-12.9	R
Feb-16	229	301	76.1%	90.0%	-13.9	R
Mar-16	244	308	79.2%	95.0%	-15.8	R
Apr-16	239	315	75.9%	95.0%	-19.1	R
May-16	235	313	75.1%	95.0%	-19.9	R
Jun-16	235	323	72.8%	95.0%	-22.2	R
Jul-16	223	323	69.0%	95.0%	-26.0	R

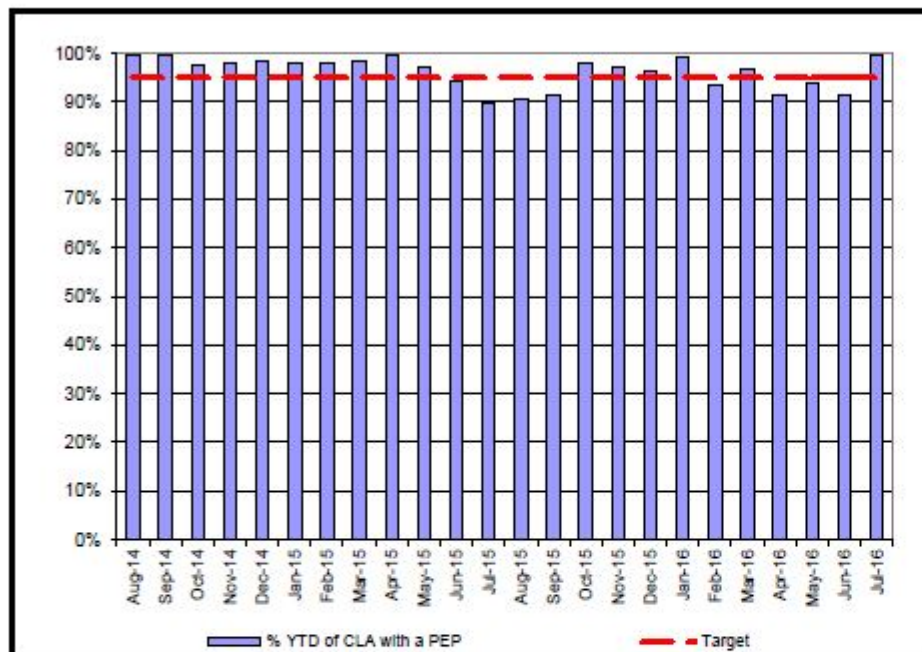
CSC Commentary
 This indicator has decreased again and is now at 69% against a target rate of 95%. This continues the downward trend since March 2016 where performance has not improved. In part, this poor performance is due to a number of teenage children who consistently refuse dental check and a number of unaccompanied minors who have been registered with dentists but who have significant waiting time delays before they can be seen for check-ups. The HoS will look into the reasons for the current co-hort of children in care who have not had their routine dental checks and report back on this to the CIC Board. However, teams will continue to focus on those young people who's dental checks are at 11 months to try and avoid the figure slipping further downward.

Definition
 The percentage of children looked after who have had a dental check within the previous 12 months.
 Children looked after aged between 3 and 17 years old that have a dental check recorded on Liquidlogic that was completed within the previous 12 months. The denominator is the number of children looked after (3 - 17) at the month end.

G >= 95%	A > 90%	R < 90%
----------	---------	---------

Chart 17

Personal Education Plans (PEPs) July 2016



Month	Num.	Denom.	% YTD	Target	Variance	RAG
Aug-14	237	238	99.6%	95.0%	4.6	G
Sep-14	203	204	99.5%	95.0%	4.5	G
Oct-14	207	212	97.6%	95.0%	2.6	G
Nov-14	209	213	98.1%	95.0%	3.1	G
Dec-14	211	214	98.6%	95.0%	3.6	G
Jan-15	209	213	98.1%	95.0%	3.1	G
Feb-15	209	213	98.1%	95.0%	3.1	G
Mar-15	213	216	98.6%	95.0%	3.6	G
Apr-15	213	214	99.5%	95.0%	4.5	G
May-15	214	220	97.3%	95.0%	2.3	G
Jun-15	212	225	94.2%	95.0%	-0.8	G
Jul-15	208	230	89.6%	95.0%	-5.4	G
Aug-15	193	213	90.6%	95.0%	-4.4	G
Sep-15	195	213	91.5%	95.0%	-3.5	A
Oct-15	208	210	98.1%	95.0%	3.1	R
Nov-15	215	221	97.3%	95.0%	2.3	A
Dec-15	214	222	96.4%	95.0%	1.4	A
Jan-16	218	218	99.1%	95.0%	4.1	G
Feb-16	217	232	93.5%	95.0%	-1.5	G
Mar-16	232	240	96.7%	95.0%	1.7	G
Apr-16	222	243	91.4%	95.0%	-3.6	G
May-16	233	248	94.0%	95.0%	-1.0	A
Jun-16	232	254	91.3%	95.0%	-3.7	G
Jul-16	253	254	99.6%	95.0%	4.6	A

CSC Commentary

LL has been updated by PVS to support the reflection of an accurate picture of PEP completion, hence the improvement. We have been able to undertake this task as schools are currently closed but will be unable to do so in the future. Social Workers will continue to be reminded that they must record PEP meetings on LL. I have highlighted to the PMT that the RAG rating is inaccurate.

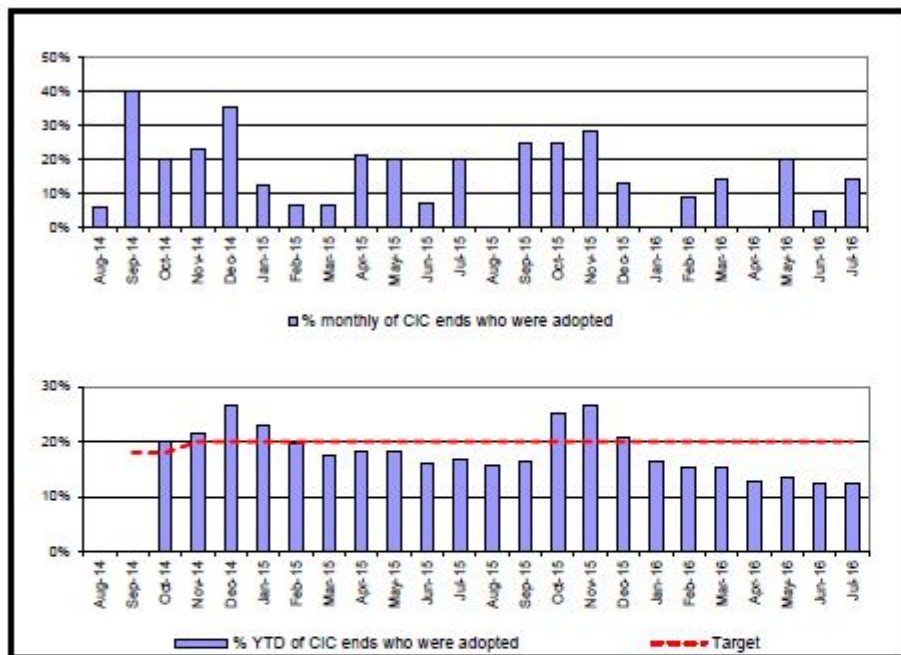
Definition

The denominator is the number of children in care who are of school age. The numerator is of those children, the number that have a PEP added to the system.

G = 95% A=95%-90% R < 90%

Chart 18

Percentage of children adopted July 2011



CSC Commentary
 The percentage of children who ceased to be in care as a result of an adoption order is within 1% of the performance last year. This demonstrates good performance in the context of a decreasing trend of adoption orders nationally. Given the national context of a growth in SGOs and a decline in adoption orders the RAG rating will need adjusting for this indicator.

Month	Adop.	CiC Ends	% monthly	% YTD	Target	Var	RAG
Aug-14	1	17	5.9%	0.0%	18.0%	-18.0	G
Sep-14	4	10	40.0%	0.0%	18.0%	-18.0	A
Oct-14	3	15	20.0%	20.0%	18.0%	2.0	G
Nov-14	3	13	23.1%	21.4%	20.0%	1.4	G
Dec-14	6	17	35.3%	26.7%	20.0%	6.7	G
Jan-15	2	16	12.5%	23.0%	20.0%	3.0	A
Feb-15	1	15	6.7%	19.7%	20.0%	-0.3	A
Mar-15	1	15	6.7%	17.6%	20.0%	-2.4	A
Apr-15	3	14	21.4%	18.1%	20.0%	-1.9	A
May-15	2	10	20.0%	18.3%	20.0%	-1.7	A
Jun-15	2	28	7.1%	16.1%	20.0%	-3.9	A
Jul-15	5	25	20.0%	16.7%	20.0%	-3.3	A
Aug-15	0	11	0.0%	15.6%	20.0%	-4.4	A
Sep-15	5	20	25.0%	16.6%	20.0%	-3.4	A
Oct-15	4	16	25.0%	25.0%	20.0%	5.0	G
Nov-15	4	14	28.6%	26.7%	20.0%	6.7	A
Dec-15	3	23	13.0%	20.8%	20.0%	0.8	A
Jan-16	0	14	0.0%	16.4%	20.0%	-3.6	A
Feb-16	1	11	9.1%	15.4%	20.0%	-4.6	A
Mar-16	1	7	14.3%	15.3%	20.0%	-4.7	A
Apr-16	0	16	0.0%	12.9%	20.0%	-7.1	A
May-16	2	10	20.0%	13.5%	20.0%	-6.5	A
Jun-16	1	20	5.0%	12.2%	20.0%	-7.8	A
Jul-16	1	7	14.3%	12.3%	20.0%	-7.7	A

YTD:	22	169	--	13.0%	20.0%	-7.0	A
-------------	-----------	------------	-----------	--------------	--------------	-------------	----------

Definition
 The number of children adopted as a percentage of the number of children who ceased to be in care



Year	PCC Result	SN Result	ENG Result
2012-13	13.0%	19.0%	14.0%
2013-14	18.0%	22.4%	17.0%
2014-15	19.0%	24.0%	17.0%